



KENT-MOORE

INSTRUCTIONS

Heavy Duty Division

PT 2200-40, PT 2200-42, PT 2200-46 MACK COUNTERBORE CUTTER PLATES

The applications of the new Cutter Plates are as follows:

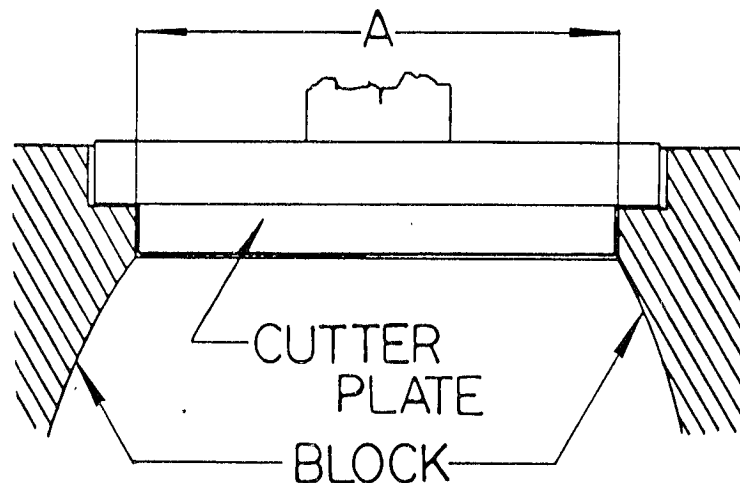
PT 2200-40 used on the Mack 673/675

PT 2200-42 used on the Mack 865/866

PT 2200-46 used on the Mack EM9-400

These new style plates should be used with PT 2200-A, or PT 2250-A Drive Units. These new Cutter Plates locate in the lower diameter (see A illustration) below the counterbore diameter.

For detailed instructions on the use of the Cutter Plates, refer to instructions in Form No. PT85-380 for PT 2250-A and PT 2200-A.



PT85-397



KENT-MOORE

Kent-Moore Heavy Duty Division
Sealed Power Corporation
29784 Little Mack
Roseville, MI 48066-9984
Telephone 313-774-9500